

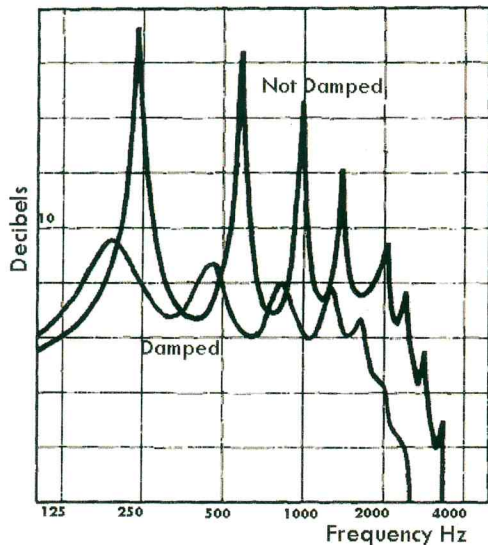
Providing Solutions for
Today's Panel Needs

Acoustic-Ply

What Are Acoustic-Ply Panels?

Acoustic-Ply panels are sound-damping plywood panels manufactured specifically to reduce structure-borne noise.

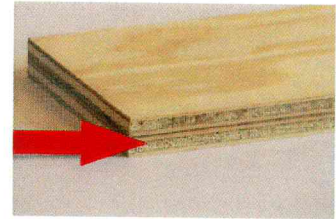
How Do They Work?



Resonant vibrations are significantly reduced with Acoustic-Ply.

Acoustic-Ply panels combine the best of plywood's properties with a visco-elastic inner-layer, or cork, rubber, metal, or other material.

These custom-engineered sandwich panels can be manufactured to fit the application and reduce noise problems.



Acoustic-Ply Advantages

- ❖ Sound-damping material combined with plywood into one layer eliminates the need and expense of additional products.
- ❖ Replaces standard plywood, OSB or MDF.
- ❖ Lightweight, easy to handle, cut, and shape.
- ❖ Available in convenient sizes or cut-to-size.
- ❖ Ready to apply directly to framing, same as standard plywood.
- ❖ Excellent noise reduction and moisture-resistant thermal insulation.
- ❖ Matches or blends into its surroundings when finished with an overlay.
- ❖ Uses the same machines, tools, and fasteners as ordinary plywood.
- ❖ Can be screwed, pinned, bolted, or nailed without altering the acoustic properties.

Common Industry Applications



Transportation

Bus, Rail, Light rail, Rail Cars, Trucks, Trailers, Containers, Class A Recreation



Construction

Commercial, Industrial and Residential.
Above ceilings, below floors,
or behind walls.



Marine

Yachts, Cruisers, Runabouts.
Floors, Bulkheads, Engine compartments,
and Decks.

Guaranteed against delaminating and manufacturing defects for the life of the panel.

GW Industries, Inc

Corporate Address: 9450 SW Commerce Circle, #101 ❖ Wilsonville, Oregon 97070

Phone (503) 682-9095 ❖ Toll Free (866) 504-9095 ❖ Fax (503) 682-9098

www.gwi.us.com Email: info@gwi.us.com



ACOUSTICAL PROPERTIES

Damping of structure-borne noise - Plywood is a common construction material for floors in buses and railway carriages and is frequently used for floors, bulkheads and decks in large pleasure craft. In addition to the mechanical and strength properties, the acoustical properties of the material can be just as important.

Since wood-based construction materials usually have low internal losses, i.e. a low capacity for converting vibrational energy to thermal energy, the resonant vibrations and structure-borne noise become extremely powerful resulting in the radiation of undesirable airborne noise.

PRODUCT INFORMATION

DESCRIPTION

Acoustic-Ply is a constrained layer damped panel for the reduction and control of structure-borne noise and vibration.

CONSTRUCTION

Acoustic-Ply is constructed using two outer layers of plywood, particleboard, hardboard, or gypsum with an inner layer of visco-elastic adhesive.

SPECIFICATIONS

Grade: Panels can be laid-up using any GW Industries approved customer-specified flat panel. For plywood panels, we recommend choosing one of GW Industries proprietary grades.

Glue Bond: Panels per manufacturer's specifications. Inner layer of visco-elastic adhesive.

Sanding: To customer specifications.

Treatment: Preservative, fire retardant, or custom treating to any specification.

Sizes: Standard thicknesses – 1/4" through 1-1/2" in 4' x 8' to 5' x 10'.

Machining: Can be ordered completely cut-to-size, machined and drilled.

Weight: Inner layer adds .15 pounds per square foot to any specified substrates.

STORAGE

Acoustic-Ply shall be stacked on a level surface in a dry place protected from dampness, with a minimum of three stickers under each unit.

INSTALLATION

Acoustic-Ply shall be nailed, screwed, stapled, or bolted to the understructure at no greater than 12" centers along the edges and not greater than 24" centers in the middle of the panel.

WARRANTY

Acoustic-Ply is guaranteed against delamination and manufacturing defects for the life of the panel when installed per manufacturers' specifications. GW Industries will not be held responsible for damage caused by improper installation or handling, or assume liability for consequential damages.

GW Industries, Inc.

Corporate Address: 9450 SW Commerce Circle, #101 ❖ Wilsonville, Oregon 97070
Phone (503) 682-9095 ❖ Toll Free (866) 504-9095 ❖ Fax (503) 682-9098
www.gwi.us.com Email: info@gwi.us.com